

# EWP PROGRAM

## Arlington Branch

Unique, Economical, Sub-contractor Friendly Designs | Single/Multi-family, Commercial | Custom Truss | Builder/Contractor Consultations

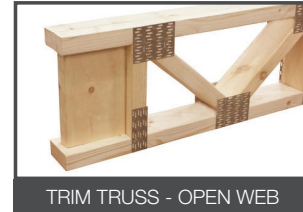
### STOCKING LENGTHS ONLY – NO SPECIAL CUTS



RIGIDLAM LVL



RFPI JOIST - LVL FLANGE



TRIM TRUSS - OPEN WEB

#### RIGIDLAM LVL

- Simply better than conventional lumber
- Dimensionally stable
- Longer spans, fewer supports required
- Greater load carrying capacity, wide width (up to 7ft)
- APA quality assured
- FSC certified LVL available

RIGIDLAM LVL (2.0E / 3,100Fb)																
Sku#	Depth	Description	Lengths Stocked													
			12'	14'	16'	18'	20'	22'	24'	26'	28'	30'	32'	36'	40'	48'
LVL17512xx	11-7/8"	1-3/4" X 11-7/8"	•	•	•	•	•	•	•	•	•	•	•	•	•	•
LVL17514xx	14"	1-3/4" X 14"	•	•	•	•	•	•	•	•	•	•	•	•	•	•
LVL17516xx	16"	1-3/4" X 16"	•	•	•	•	•	•	•	•	•	•	•	•	•	•
LVL17518xx	18"	1-3/4" X 18"				•	•	•	•	•	•	•	•	•	•	•
LVL17524xx	24"	1-3/4" X 24"					•	•	•	•	•	•	•	•	•	•

#### RFPI-JOIST

- Save time & money
- Provides better nailing target – fewer shiners
- Build a higher quality home
  - Floors are more level and stronger – no squeaks
  - Conducive to modern, open floor plans
  - Run HVAC & plumbing through the webs of RFPI-Joists

RFPI-JOIST																
Sku#	Depth	Description	Lengths Stocked													
			12'	14'	16'	18'	20'	22'	24'	26'	28'	30'	32'			
<b>Series 20</b>																
RFP2014xx	14"	1-3/4" X 1-3/8" LVL Flange/ 3/8" OSB Web	•	•	•	•	•	•	•	•	•	•	•	•	•	•
<b>Series 40</b>																
RFP4012xx	11-7/8"	2-5/16" X 1-3/8" LVL Flange/ 3/8" OSB Web	•	•	•	•	•	•	•	•	•	•	•	•	•	•
RFP4014xx	14"	2-5/16" X 1-3/8" LVL Flange/ 3/8" OSB Web	•	•	•	•	•	•	•	•	•	•	•	•	•	•
RFP4016xx	16"	2-5/16" X 1-3/8" LVL Flange/ 3/8" OSB Web	•	•	•	•	•	•	•	•	•	•	•	•	•	•
<b>Series 90</b>																
RFP9016xx	16"	3-1/2" X 1-1/2" LVL Flange/ 7/16" OSB Web										•	•	•	•	•
<b>OSB RIMBOARD</b>																
RIM0SB12xx	11-7/8"	1-1/8" X 11-7/8" OSB RIMBOARD	•													
RIM0SB14xx	14"	1-1/8" X 14" OSB RIMBOARD	•													
RIM0SB16xx	16"	1-1/8" X 16" OSB RIMBOARD	•													

#### TRIM TRUSS

- Open web design means no cutting for HVAC and utilities
- Trimmable truss – no need to pre-measure
- 2x4 plated truss is stronger compared to some competitor's 2x3 truss

TRIM TRUSS																
Sku#	Depth	Description	Lengths Stocked													
			6'	8'	10'	12'	14'	16'	18'	20'	22'	24'	26'			
RTT216xx	16"	Double Ended Trim Truss 2" X 4"	•	•	•	•	•	•	•	•	•	•	•	•	•	•

"xx" = Specific Length in Feet

## BE IMPRESSIVE

Our Mission. Your Advantage.

800.394.1993 ■ 214.381.2121  
[WWW.DWDISTRIBUTION.COM](http://WWW.DWDISTRIBUTION.COM)

20220622



**SIMPSON****Strong-Tie****Building  
Strong**

# HANGERS + SCREWS

## Strength Beyond Steel



**HGUS**  
Double-Shear SCL Hangers

Face-Mount Hangers for Glulam Beams

Designed for applications where high loads are needed these hangers have double-shear nailing. This patented innovation distributes load through two points on each joist nail for greater strength.



**HU/HUC**  
Hangers

Face-Mount Masonry Hangers

Heavy-duty, face-mount joist hangers available with standard and concealed flanges as well as skewed 45°.



**ITS**  
EWP Hangers

Top-Flange Hangers for I-Joists

These top-flange I-Joist hangers offer superior performance and faster installation. The Strong-Grip™ seat allows joist installation without joist nails resulting in the lowest installed cost.

SKU	DESCRIPTION	APPLICATION
<b>SIMPSON STRONG-TIE HANGERS</b>		
IUS2371188	IUS2.37/11.88 FACE MT	40 Series I-Joists
SSIUS23714	IUS2.37/14 FACE MT	40 Series I-Joists
SSIUS23716	IUS2.37/16 FACE MT	40 Series I-Joists
SSIUS35616	IUS3.56/16 FACE MT	90 Series I-Joists
SSITS23711	ITS2.37/11.88 TOP MT	40 Series I-Joists
SSITS23714	ITS2.37/14 TOP MT	40 Series I-Joists
SSITS23716	ITS2.37/16 TOP MT	40 Series I-Joists
SSITS35616	ITS3.56/16 TOP MT	90 Series I-Joists
STMIU47511	MIU4.75/11 DBL FACE MT	40 Series I-Joists
STMIU47514	MIU4.75/14 DBL FACE MT	40 Series I-Joists
STMIU47516	MIU4.75/16 DBL FACE MT	40 Series I-Joists
SSTHU4142	HU414-2 DBL FACE MT	90 Series I-Joists
SSTHU11	HU11 FACE MT	1-PLY LVL
SSTHU412	HU412 FACE MT	2-PLY LVL Light*
SSTHU414	HU414 FACE MT	2- PLY LVL Light*
SSTHGUS412	HGUS412 FACE MT	2-PLY LVL Heavy**
SSTHGUS414	HGUS414 FACE MT	2- PLY LVL Heavy**
HGUS55014	HGUS5.50/14 FACE MT	3-PLY LVL
HGUS72514	HGUS7.25/14 FACE MT	4-PLY LVL
SSTHUC412	HUC412 CONCEALED FACE MT	2-PLY LVL Light*
SSTHUC416	HUC416 CONCEALED FACE MT	2-PLY LVL Light*
SSTLSSUI35	ADJUSTABLE	40 Series I-Joists
SSTLSSU410	ADJUSTABLE	90 Series I-Joists
SSTSUL414	FIXED 45° LEFT	2- PLY LVL Light*
SSTSUR414	FIXED 45° RIGHT	2- PLY LVL Light*
<b>SCREWS</b>		
SDW22634R50	4 PLY LVL 6-3/4" SCREWS 50/BX	
SDW22500R50	3 PLY LVL 5" SCREWS 50/BX	
* Light is less than 3,000 lbs. **Heavy is 3,000-10,000 lbs.		



**IUS**  
I-Joist Hangers

Face-Mount Hangers for I-Joists

A hybrid hanger that incorporate the advantages of the face-mount and top-mount hanger. Installation is fast with the Strong-Grip™ seat, easy-to-reach face nails and self-jigging locator tabs.



**SUR/SUL**  
Skewed 45° Hangers

For I-Joist and SCL

These 45° skewed hangers make the installation of single and double I-joists easier because they encapsulate the top-flange of the I-joist, eliminating the need for web stiffeners



800.394.1993 ■ 214.381.2121  
WWW.DWDISTRIBUTION.COM

20220622

**BE IMPRESSIVE**

Our Mission. Your Advantage.